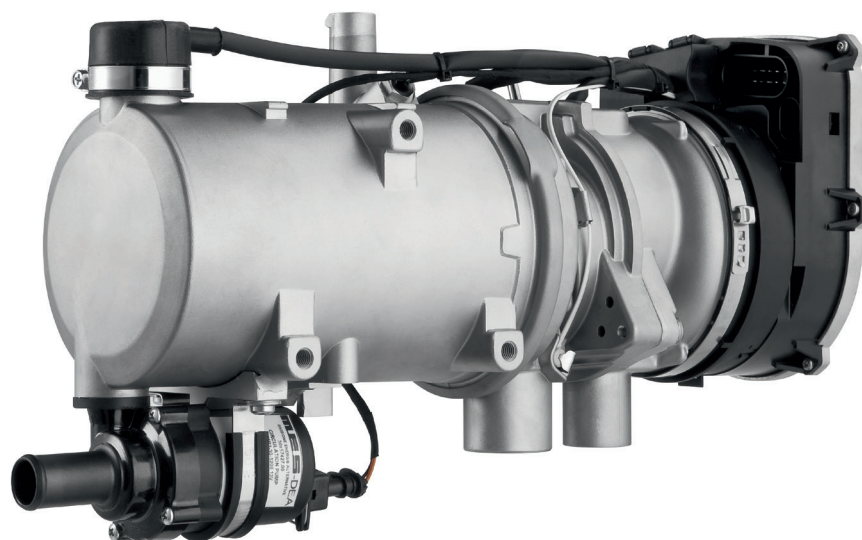


Thermo Pro 90

Engine-Off Coolant Heater for Demanding Machinery and Vehicle Applications



Engine Pre-heat, Fuel Savings and Emission Reduction

The Thermo Pro 90 has been specially designed for use in heavy duty machinery and commercial vehicles, as well as in minibuses.

New features such as altitude adjustment, Arctic Start and seamless heating control provide engine-off pre-heat to make these vehicles operational in extremely cold conditions. Fuel saving and low energy consumption make a valuable contribution to both cost-savings and environmental protection.

Features:

- Auxiliary heating for heavy vehicles and machines,
- offering up to 31,000 BTU/h (9.1 kW) of heating power
- Arctic Start function provides quick pre-heat even in extremely cold temperatures
- Low heater power consumption due to highly efficient design
- Highest product quality with long service life
- Automatic altitude adjustment up to 11,000 feet (3,350 m)
- Available for OE and aftermarket installation
- Several mounting options available
- Quiet operation



Material handling



Airport



Specialty vehicles



Agriculture



Recreational vehicles



Off-highway



Bus



Marine



Light duty vehicles



Truck

Technical specifications

	Thermo Pro 90
Heating Capacity (Control range / Boost)	6,100 – 26,000 BTU/h / 31,000 BTU/h (1.8 – 7.6 kW / 9.1 kW)
Fuel Consumption (Control range / Boost)	0.05 – 0.23 gal/h / 0.29 gal/h (0.2 – 0.9 l/h / 1.1 l/h)
Fuels (Suitability for special fuels)	JP8, Diesel 1, Diesel 2, Arctic, Biodiesel (PME)
Rated Voltage	12V or 24V
Power Consumption (Part load - full load / Boost)	3.1 – 6.6 / 7.3 Amps (37 – 80 W / 90 W)
Operational Temperature Range	- 40° to +176° F (- 40° to +80° C)
Dimensions (L x W x H)	15 x 5.2 x 9.1 in (381 x 131 x 232 mm)
Weight	10.8 lbs (4.9 kg)

Technical specifications for circulating pump (attached to heater)

	U4840
Coolant Flow	3 gal/min (11.4 l/m)
Dimensions (L x W x H)	7.1 x 2.9 x 4.4 in (180 x 74 x 112 mm) including connectors
Weight	1.5 lbs (0.7 kg)

Available Thermo Pro 90 Heater Kits:

- Thermo Pro 90 Diesel Enclosure Box with SmarTemp Control 3.0 Bluetooth (12V) - P/N: 5013916
- Thermo Pro 90 Compact Kit (12V) - P/N: 5010874
- Thermo Pro 90 with Enclosure Box (12V) - P/N: 5010872
- Thermo Pro 90 Compact Kit (24V) - P/N: 5011081
- Thermo Pro 90 with Enclosure Box (24V) - P/N: 5010873

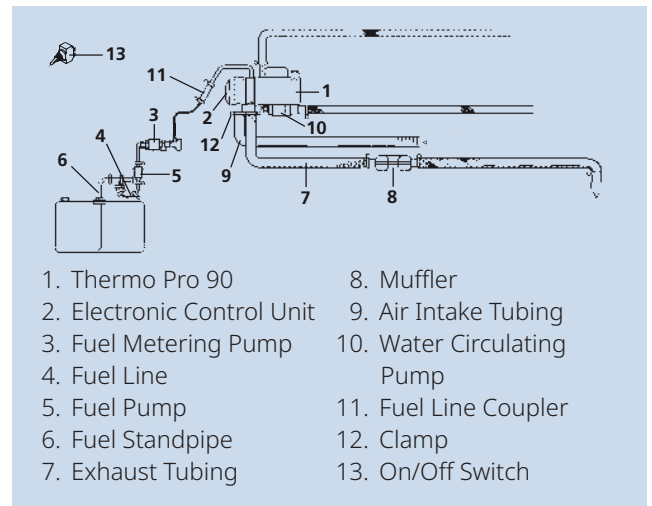
SmarTemp Control 3.0 Bluetooth:

Part Number 5013874

- Same features as SmarTemp 3.0
- Bluetooth connection to SmarTemp 3.0 App
 - View diagnostic information
 - Manage & control heater function
 - Link to techwebasto.com
 - Program settings of multiple units



System schematic



Standard Kit Contents:

- Heater
- Integrated Control Unit
- Fuel Metering Pump DP42
- Circulation Pump U4840
- On / Off Switch
- Wiring Harness
- Fuel Standpipe
- Fuel Line
- Exhaust System
- Installation Hardware
- Installation/Operation Instructions
- 2 Year / 2,000 Hour Limited Warranty



Contact